

FDRVIEWS

DASD MANAGEMENT REPORTING

z/OS Storage Management



Users are demanding more and more DASD storage to meet their business needs. Although the cost per TB continues to decrease, total storage requirement keeps growing.

To monitor, understand and control this growth, you need a tool that can quickly and efficiently gather information “on-demand” about your z/OS DASD storage environment...and then give you a reporting mechanism that can provide answers to all your critical storage management questions.



Fast. Efficient. Easy.

- FDRVIEWS takes scheduled or ad hoc “snapshots” of the status of your z/OS DASD storage. These snapshots can be taken at the volume or data set level.
- The collection process is quick and requires very little CPU resource, which means that you can run it whenever you wish, and with minimal impact on your z/OS environment.
- Once the raw data has been collected, the FDRVIEWS Windows-based GUI interface is used to interrogate the data through a simple “ask a question, get an answer” query system.
- Having asked the appropriate “question”, you can then view the “answer” in a variety of formats, such as bar charts, pie charts and tables etc.–all viewed through a standard Microsoft Excel spreadsheet.

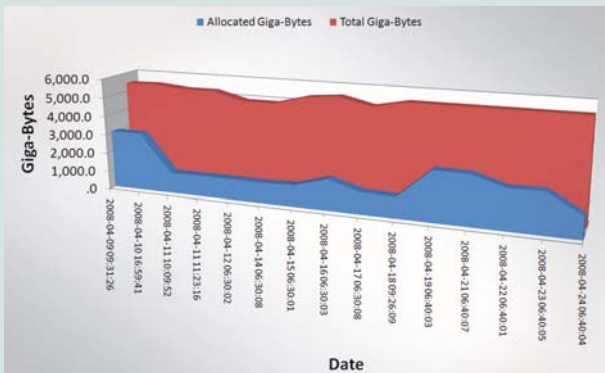


Introducing FDRVIEWS

FDRVIEWS is a cost-option to FDREPORT or FDRABR which enables you to manage your current storage requirements, identify trends, predict future requirements, and anticipate peak demands. FDRVIEWS is easy-to-use. It makes your life much simpler, and it allows you to put a powerful reporting tool into the hands of other, less-experienced users.



Examples



Storage Trending

	VLVOLSER	VLUNIT	VLDEVTYP	VL%UTRKS	VLTRKVOL	VLFRETRK	VLFREBYT
2	USTWKA	0x700F	3380-K	100	39,825	252	11,963,952
3	USTWK8	0x7064	3390-9	99	150,255	2,474	140,016,744
4	IDPLB3	0x7026	3390-3	99	50,085	737	44,761,368
5	SYTS41	0x70B8	3390-27	98	491,400	13,806	782,303,194
6	SYTS43	0x70BA	3390-27	93	491,400	37,536	2,126,939,904
7	SYTS24	0x70A7	3390-27	92	491,400	40,675	2,304,808,200
8	CICS31	0x7045	3390-2	87	33,390	4,362	247,168,368
9	SYTS44	0x70BB	3390-27	86	491,400	72,458	4,105,760,112
10	SYSLB8	0x701E	3390-3	85	50,085	7,759	439,655,976
11	CICS32	0x704A	3390-2	83	33,390	5,992	339,530,688
12	USTWK4	0x7060	3390-9	81	150,255	29,800	1,688,587,200
13	SYSWK5	0x7066	3390-9	76	150,255	36,167	2,049,366,888
14	SYSLB2	0x702D	3390-3	76	50,085	12,335	698,950,440
15	SYSLB7	0x7021	3390-3	76	50,085	12,453	705,636,792
16	SOFTC1	0x703D	3390-2	75	33,390	8,417	476,940,888
17	SOFTC2	0x703E	3390-2	75	33,390	8,465	479,660,760
18	IDPLB7	0x7036	3390-2	75	33,390	8,505	481,927,320
19	SYTS40	0x70B7	3390-27	74	491,400	130,495	7,394,368,880
20	SYSLB4	0x7038	3390-2	74	33,390	8,719	494,053,416
21	IDPLB5	0x7034	3390-2	73	33,390	9,160	519,042,240
22	CICS22	0x7044	3390-2	73	33,390	9,120	516,775,680

Volume Utilization

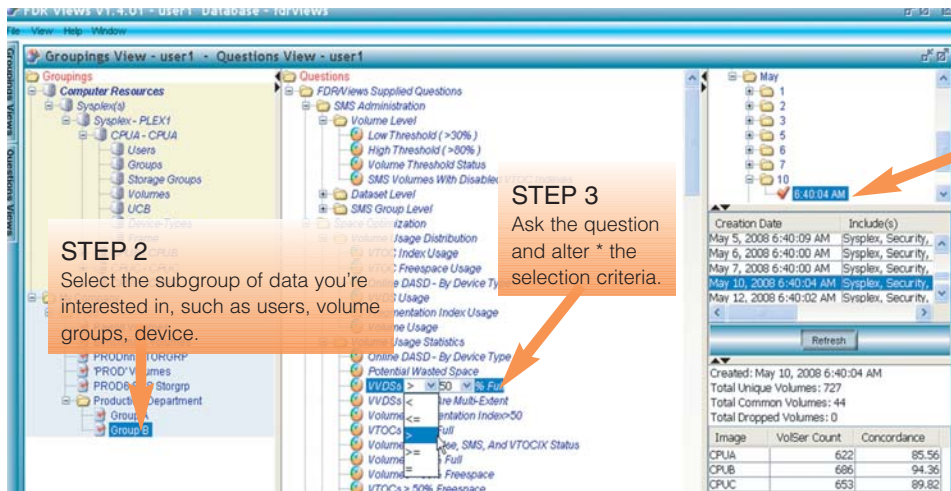
FDRVIEWS

DASD MANAGEMENT REPORTING



Three Simple Steps

Once you've taken some ad hoc or scheduled data collections, just three simple steps are all that's required to choose the data you wish to report on and then ask the questions you wish to have answered.



STEP 2
Select the subgroup of data you're interested in, such as users, volume groups, device groups, device.

STEP 3
Ask the question and alter * the selection criteria.

STEP 1
Choose the data snapshot that you want to report from (by default, the most recent one is used).

** The ability to tailor the selection criteria allows you to create an almost limitless range of questions*

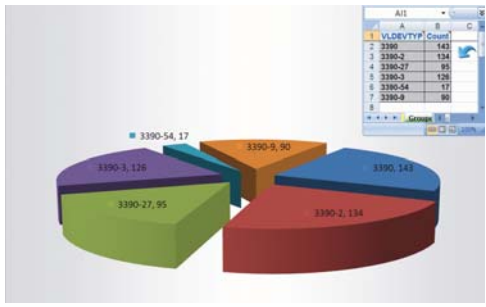
Efficient Data Collection

FDRVIEWS' high-performance data collection process can be run on an ad hoc or scheduled basis. In a recent test, we ran a volume and dataset level collection against 8,000 volumes (43TB's) and 1 million datasets. The collection took just 23 minutes. This non-obtrusive process allows you to run your collections as frequently as required, and without affecting the performance of your z/OS system, or the users and applications that run under it. The collected data is then sent across to the Windows client and stored for fast, easy and flexible reporting. With FDRVIEWS, your z/OS Storage Management reporting just got a whole lot simpler!

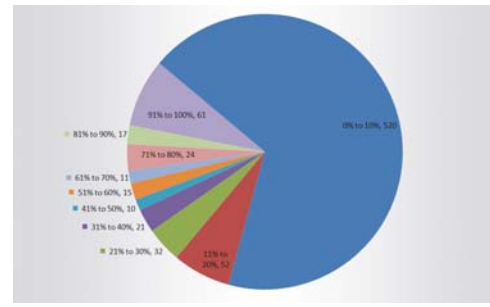
Report Views

The "answer" to each "question" can be viewed in a variety of formats:

Grouped By Device Type



Count of Volumes In Percent Free Range



Want to Know More About FDRVIEWS? For a No-Obligation FREE Trial or to request a FREE Concepts & Facilities Guide, ask your local sales representative or visit: <http://www.innovationdp.fdr.com>



CORPORATE HEADQUARTERS: 275 Paterson Ave., Little Falls, NJ 07424 • (973) 890-7300 • Fax: (973) 890-7147
 E-mail: support@fdrinnovation.com • sales@fdrinnovation.com • <http://www.innovationdp.fdr.com>

EUROPEAN OFFICES:	FRANCE	GERMANY	NETHERLANDS	UNITED KINGDOM	NORDIC COUNTRIES
	01-49-69-94-02	089-489-0210	036-534-1660	0208-905-1266	+31-36-534-1660